




Custom House Plan Catalog  
**Prepared exclusively for: Cabins 2, Noah Homes**  
 Published December 3, 2008



**50-123** 936 sq ft  
 2 bedrooms  
 1 baths  
 0 garage stalls  
 1 levels



**21-157** 1650 sq ft  
 3 bedrooms  
 2 baths  
 2 garage stalls  
 1 levels



**21-169** 800 sq ft  
 2 bedrooms  
 1 baths  
 0 garage stalls  
 1 levels




**21-204** 400 sq ft  
 1 bedrooms  
 1 baths  
 0 garage stalls  
 1 levels




**21-227** 1900 sq ft  
 3 bedrooms  
 2.5 baths  
 2 garage stalls  
 2 levels




**21-232** 950 sq ft  
 2 bedrooms  
 1 baths  
 0 garage stalls  
 1 levels




**21-263** 2104 sq ft  
 3 bedrooms  
 2.5 baths  
 2 garage stalls  
 1 levels




**23-2198** 835 sq ft  
 2 bedrooms  
 1 baths  
 0 garage stalls  
 1 levels



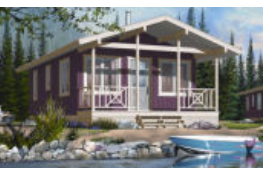
**406-9619** 815 sq ft  
 1 bedrooms  
 1 baths  
 1 garage stalls  
 1 levels



**48-303** 950 sq ft  
 1 bedrooms  
 1 baths  
 0 garage stalls  
 2 levels



**430-3** 900 sq ft  
 2 bedrooms  
 2 baths  
 1 garage stalls  
 1 levels



**23-2291** 540 sq ft  
 2 bedrooms  
 1 baths  
 0 garage stalls  
 1 levels



ADVICE & ORDERING  
1-888-705-1300  
MONDAY-FRIDAY  
6AM-6PM PST

## House Plan 50-123

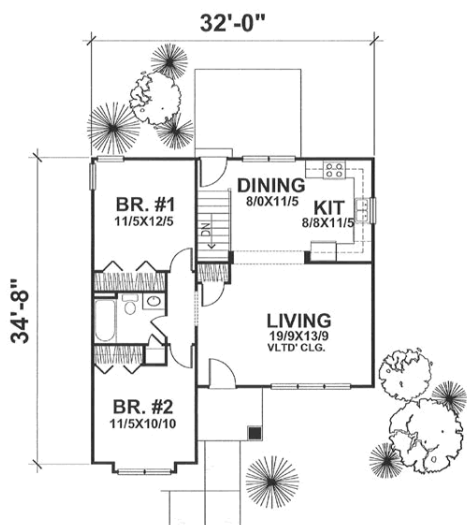
Published 12/3/2008



Square Footage:	936
Bedrooms:	2
Bathrooms:	1
Levels:	1
Garage Stalls:	0
Main Floor Area:	936
Basement Area:	936
Width:	32'
Depth:	35'
Roof Pitch:	8:12
Available Foundations:	Basement

If your foundation preference is not available, please contact us toll-free at 1-888-705-1300

### Main Level



### Lifestyle Features:

- Open Floor Plan
- Suited For Narrow Lot
- Unfinished Basement
- Volume/Vaulted Ceiling



ADVICE & ORDERING  
**1-888-705-1300**  
 MONDAY-FRIDAY  
 6AM-6PM PST

## House Plan 21-157

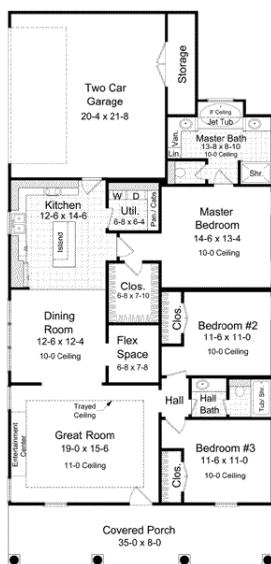
Published 12/3/2008



Square Footage:	<b>1650</b>
Bedrooms:	<b>3</b>
Bathrooms:	<b>2</b>
Levels:	<b>1</b>
Garage Stalls:	<b>2</b>
Main Floor Area:	<b>1650</b>
Width:	<b>35'</b>
Depth:	<b>74'</b>
Height:	<b>23'</b>
Roof Pitch:	<b>8:12</b>
Walls:	<b>2"x4"</b>
Available Foundations:	
Basement	
Daylight Basement	
Crawlspace	
Slab	
Pier	

If your foundation preference is not available, please contact us toll-free at 1-888-705-1300

### Main Level



### Lifestyle Features:

- Covered Front Porch
- Daylight Basement
- Great Room/Living Room
- Kitchen Island
- Rear Garage
- Side-Entry Garage
- Suited For Corner Lot
- Suited For Narrow Lot
- Walk-In Closet



ADVICE & ORDERING  
**1-888-705-1300**  
 MONDAY-FRIDAY  
 6AM-6PM PST

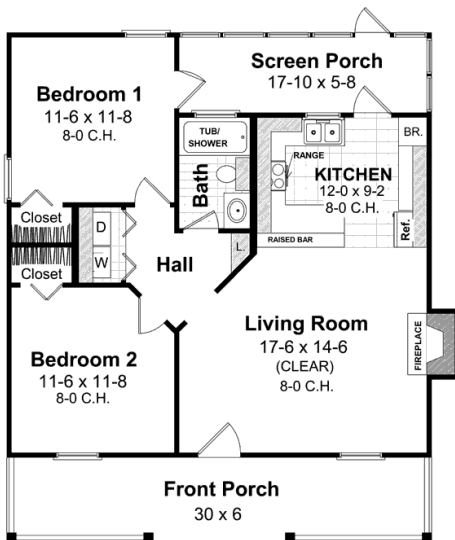
## House Plan 21-169

Published 12/3/2008



Square Footage:	<b>800</b>
Bedrooms:	<b>2</b>
Bathrooms:	<b>1</b>
Levels:	<b>1</b>
Garage Stalls:	<b>0</b>
Main Floor Area:	<b>800</b>
Porch Area:	<b>280</b>
Width:	<b>30'</b>
Depth:	<b>36'</b>
Height:	<b>22'</b>
Roof Pitch:	<b>12:12 &amp; 4:12</b>
Walls:	<b>2"x4"</b>
Available Foundations:	
Crawlspace	
Slab	

### Main Level



If your foundation preference is not available, please contact us toll-free at 1-888-705-1300

### Lifestyle Features:

- Covered Front Porch
- Peninsula/Eating Bar
- Screened Porch/Sunroom
- Suited For Vacation Home



ADVICE & ORDERING  
 1-888-705-1300  
 MONDAY-FRIDAY  
 6AM-6PM PST

## House Plan 21-204

Published 12/3/2008



Square Footage:	<b>400</b>
Bedrooms:	<b>1</b>
Bathrooms:	<b>1</b>
Levels:	<b>1</b>
Garage Stalls:	<b>0</b>
Main Floor Area:	<b>400</b>
Porch Area:	<b>240</b>
Width:	<b>22'</b>
Depth:	<b>32'</b>
Height:	<b>19'</b>
Roof Pitch:	<b>12:12 &amp; 4:12</b>
Walls:	<b>2"x4"</b>
Available Foundations:	
Crawlspace	
Slab	

### Main Level



If your foundation preference is not available, please contact us toll-free at 1-888-705-1300

### Lifestyle Features:

- Covered Front Porch
- Main Floor Bed & Bath
- Peninsula/Eating Bar
- Screened Porch/Sunroom
- Suited For Narrow Lot
- Suited For Vacation Home



ADVICE & ORDERING  
 1-888-705-1300  
 MONDAY-FRIDAY  
 6AM-6PM PST

## House Plan 21-227

Published 12/3/2008



Square Footage:	<b>1900</b>
Bedrooms:	<b>3</b>
Bathrooms:	<b>2.5</b>
Levels:	<b>2</b>
Garage Stalls:	<b>2</b>
Main Floor Area:	<b>1368</b>
Upper Floor Area:	<b>532</b>
Width:	<b>38'</b>
Depth:	<b>52'</b>
Height:	<b>26'</b>
Roof Pitch:	<b>10:12 &amp; 4:12</b>
Walls:	<b>2"x4"</b>
Available Foundations:	
Crawlspc	
Slab	

### Main Level

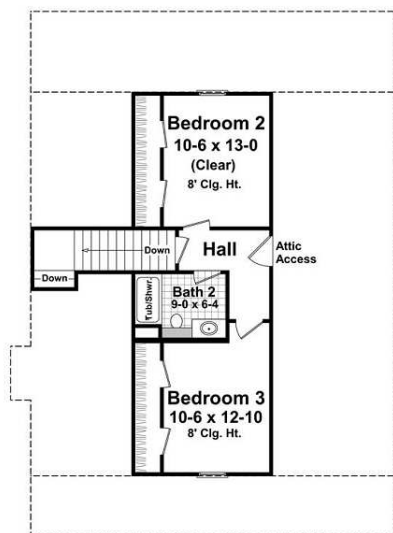


If your foundation preference is not available, please contact us toll-free at 1-888-705-1300

### Lifestyle Features:

- Carport/Porte Cochere
- Covered Front Porch
- Covered Rear Porch
- Den/Office/Study/Computer
- Economical To Build
- Great Room/Living Room
- Kitchen Island
- Main Floor Master Bed & Bath
- Peninsula/Eating Bar
- Screened Porch/Sunroom
- Storage Area
- Suited For Narrow Lot
- Volume/Vaulted Ceiling
- Walk-In Closet
- Walk-In Pantry/Cabinet Pantry

### Upper Level





ADVICE & ORDERING  
1-888-705-1300  
MONDAY-FRIDAY  
6AM-6PM PST

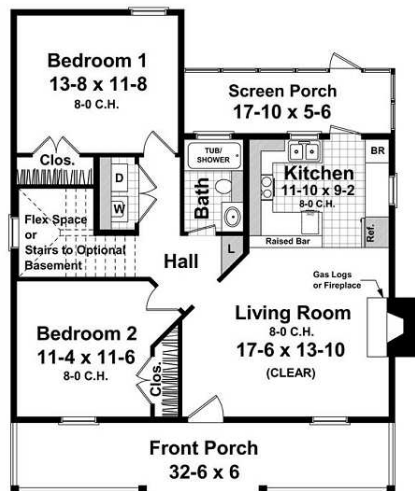
## House Plan 21-232

Published 12/3/2008



Square Footage:	950
Bedrooms:	2
Bathrooms:	1
Levels:	1
Garage Stalls:	0
Main Floor Area:	950
Width:	35'
Depth:	41'
Height:	22'
Roof Pitch:	12:12
Walls:	2"x6"
Available Foundations:	
Basement	
Crawlspace	
Slab	

### Main Level



If your foundation preference is not available, please contact us toll-free at 1-888-705-1300

### Lifestyle Features:

- Covered Front Porch
- Covered Rear Porch
- Open Floor Plan
- Peninsula/Eating Bar
- Suited For Narrow Lot



ADVICE & ORDERING  
**1-888-705-1300**  
 MONDAY-FRIDAY  
 6AM-6PM PST

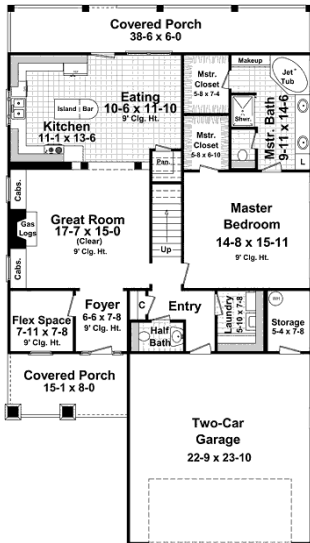
## House Plan 21-263

Published 12/3/2008

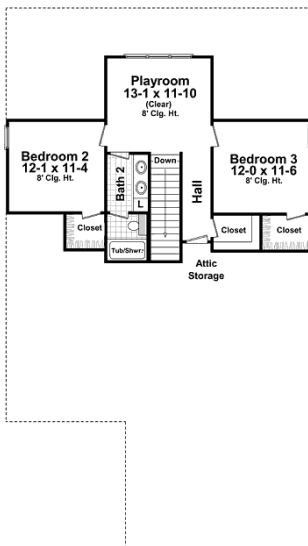


Square Footage:	<b>2104</b>
Bedrooms:	<b>3</b>
Bathrooms:	<b>2.5</b>
Levels:	<b>1</b>
Garage Stalls:	<b>2</b>
Main Floor Area:	<b>1424</b>
Upper Floor Area:	<b>680</b>
Width:	<b>38' 6"</b>
Depth:	<b>68' 4"</b>
Height:	<b>26' 10"</b>
Roof Pitch:	<b>8:12</b>
Walls:	<b>2"x4"</b>
Available Foundations:	
CrawlSpace	
Slab	

### Main Level



### Upper Level



If your foundation preference is not available, please contact us toll-free at 1-888-705-1300

### Lifestyle Features:

- Covered Front Porch
- Covered Rear Porch
- Den/Office/Study/Computer
- Great Room/Living Room
- Hobby/Rec Room/Game Room
- Kitchen Island
- Main Floor Master Bed & Bath
- Open Floor Plan
- Peninsula/Eating Bar
- Split Bedrooms
- Storage Area
- Suited For Narrow Lot
- Volume/Vaulted Ceiling
- Walk-In Closet



ADVICE & ORDERING  
**1-888-705-1300**  
 MONDAY-FRIDAY  
 6AM-6PM PST

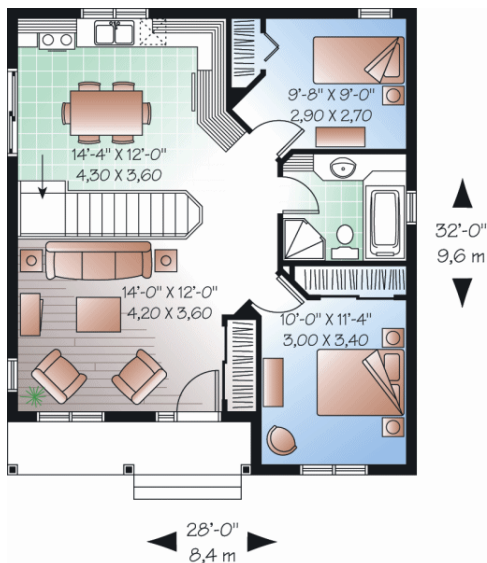
## House Plan 23-2198

Published 12/3/2008



Square Footage:	<b>835</b>
Bedrooms:	<b>2</b>
Bathrooms:	<b>1</b>
Levels:	<b>1</b>
Garage Stalls:	<b>0</b>
Main Floor Area:	<b>835</b>
Basement Area:	<b>835</b>
Width:	<b>28'</b>
Depth:	<b>32'</b>
Height:	<b>18' 6"</b>
Roof Pitch:	<b>6:12</b>
Walls:	<b>2"x6"</b>
Available Foundations:	
Basement	

### Main Level



If your foundation preference is not available, please contact us toll-free at 1-888-705-1300

### Lifestyle Features:

- Covered Front Porch
- Empty-Nester
- Nook/Breakfast Area/Dining
- Open Floor Plan
- Storage Area
- Suited For Corner Lot
- Suited For Narrow Lot



ADVICE & ORDERING  
**1-888-705-1300**  
 MONDAY-FRIDAY  
 6AM-6PM PST

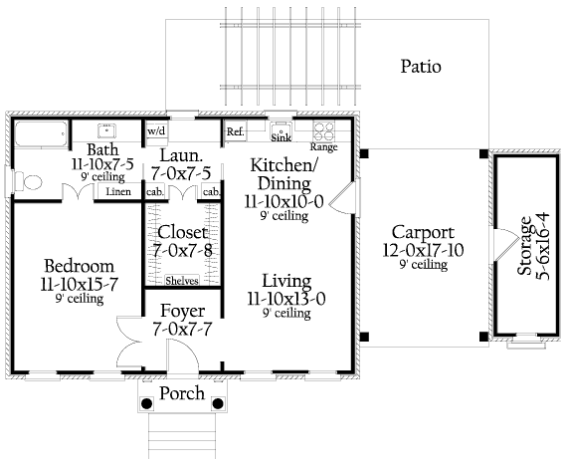
## House Plan 406-9619

Published 12/3/2008



Square Footage:	<b>815</b>
Bedrooms:	<b>1</b>
Bathrooms:	<b>1</b>
Levels:	<b>1</b>
Garage Stalls:	<b>1</b>
Main Floor Area:	<b>815</b>
Garage Area:	<b>339</b>
Porch Area:	<b>19</b>
Width:	<b>51' 10"</b>
Depth:	<b>28'</b>
Height:	<b>20'</b>
Roof Pitch:	<b>10:12</b>
Walls:	<b>2"x4"</b>
Available Foundations:	
Crawlspace	
Slab	

### Main Level



If your foundation preference is not available, please contact us toll-free at 1-888-705-1300

### Lifestyle Features:

- Breezeway
- Carport/Porte Cochere
- Covered Front Porch
- Empty-Nester
- Main Floor Bed & Bath
- Nook/Breakfast Area/Dining
- Open Floor Plan
- Storage Area
- Suited For Corner Lot
- Suited For Narrow Lot
- Walk-In Closet



ADVICE & ORDERING  
 1-888-705-1300  
 MONDAY-FRIDAY  
 6AM-6PM PST

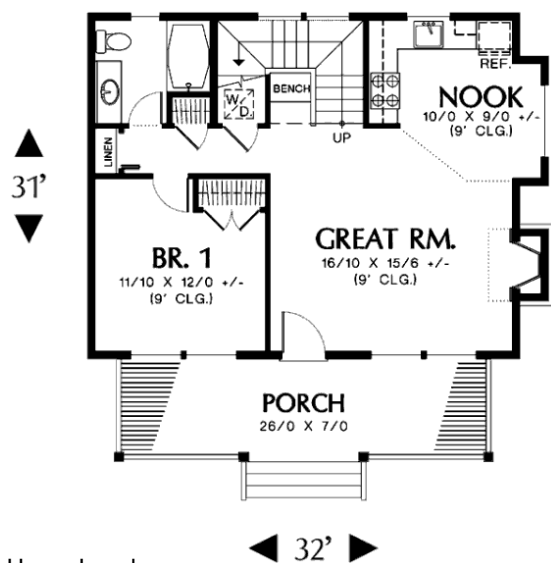
## House Plan 48-303

Published 12/3/2008

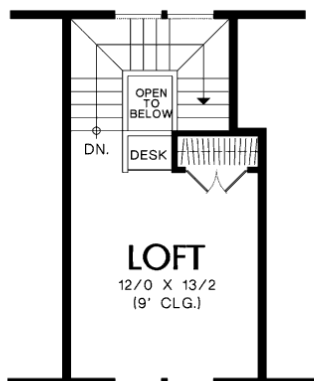


Square Footage:	<b>950</b>
Bedrooms:	<b>1</b>
Bathrooms:	<b>1</b>
Levels:	<b>2</b>
Garage Stalls:	<b>0</b>
Main Floor Area:	<b>738</b>
Upper Floor Area:	<b>212</b>
Width:	<b>32'</b>
Depth:	<b>31'</b>
Height:	<b>26'</b>
Walls:	<b>2"x6"</b>
Available Foundations:	
Basement	
Crawlspace	
Slab	

### Main Level



### Upper Level



If your foundation preference is not available, please contact us toll-free at 1-888-705-1300

### Lifestyle Features:

- Covered Front Porch
- Empty-Nester
- Great Room/Living Room
- Loft / Balcony
- Main Floor Bed & Bath
- Nook/Breakfast Area/Dining
- Open Floor Plan
- Storage Area
- Suited For Corner Lot
- Suited For Narrow Lot



ADVICE & ORDERING  
 1-888-705-1300  
 MONDAY-FRIDAY  
 6AM-6PM PST

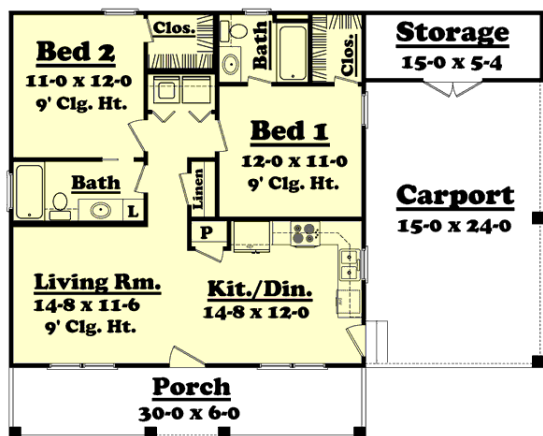
## House Plan 430-3

Published 12/3/2008



Square Footage:	<b>900</b>
Bedrooms:	<b>2</b>
Bathrooms:	<b>2</b>
Levels:	<b>1</b>
Garage Stalls:	<b>1</b>
Main Floor Area:	<b>900</b>
Garage Area:	<b>360</b>
Porch Area:	<b>180</b>
Width:	<b>45'</b>
Depth:	<b>36'</b>
Height:	<b>24' 7"</b>
Roof Pitch:	<b>12:12</b>
Walls:	<b>2"x4"</b>
Available Foundations:	
Crawlspace	
Slab	

Main Level



If your foundation preference is not available, please contact us toll-free at 1-888-705-1300

- Lifestyle Features:**
- Carport/Porte Cochere
  - Covered Front Porch
  - Economical To Build
  - Family Room/Keeping Room
  - Open Floor Plan
  - Storage Area
  - Suited For Narrow Lot
  - Volume/Vaulted Ceiling
  - Walk-In Closet



ADVICE & ORDERING  
1-888-705-1300  
MONDAY-FRIDAY  
6AM-6PM PST

## House Plan 23-2291

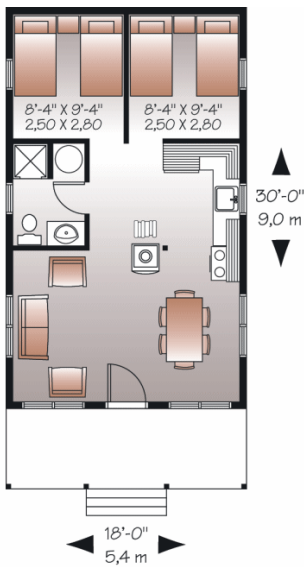
Published 12/3/2008



Square Footage:	540
Bedrooms:	2
Bathrooms:	1
Levels:	1
Garage Stalls:	0
Main Floor Area:	540
Width:	18'
Depth:	30'
Height:	13' 2"
Walls:	2"x4"
Available Foundations:	
Pier	

If your foundation preference is not available, please contact us toll-free at 1-888-705-1300

### Main Level



### Lifestyle Features:

- Covered Front Porch
- Main Floor Bed & Bath
- Nook/Breakfast Area/Dining
- Open Floor Plan
- Suited For Corner Lot
- Suited For Narrow Lot